

# EPS

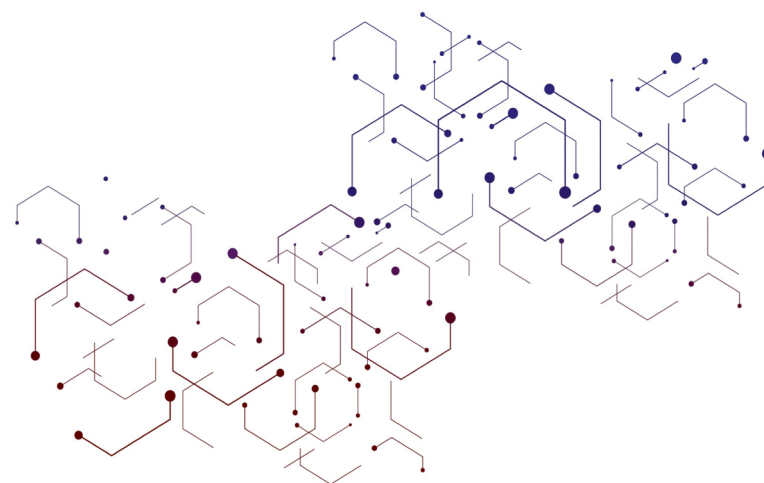


Engineering Pharma Solutions

# Technologies



**YOUR  
END-TO-END  
PARTNER IN  
PHARMA  
ENGINEERING**



## WHY CHOOSE US?



## ABOUT US

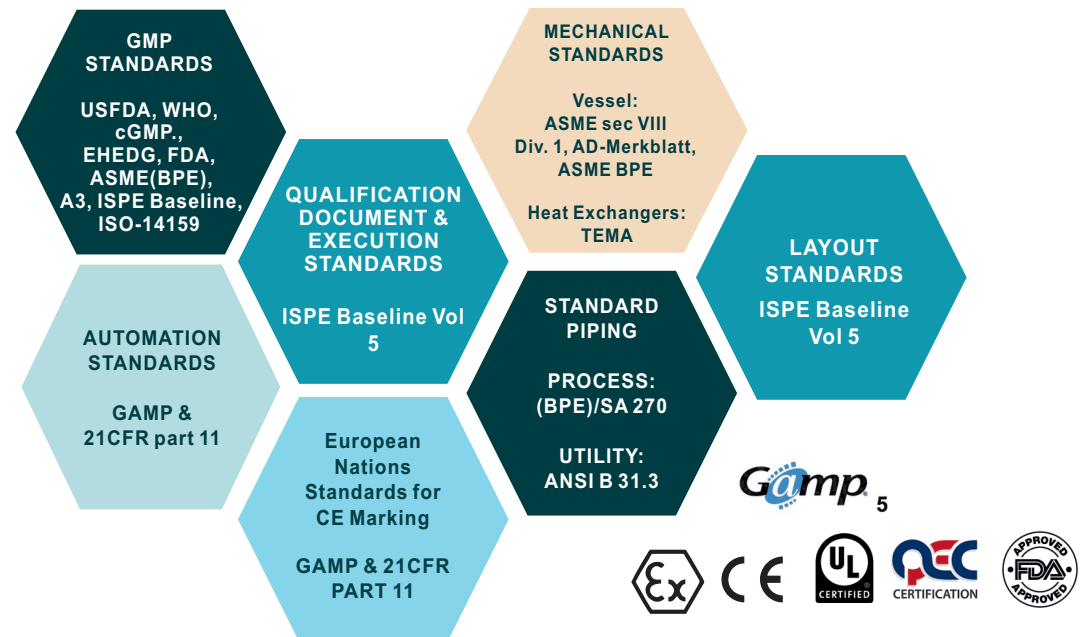
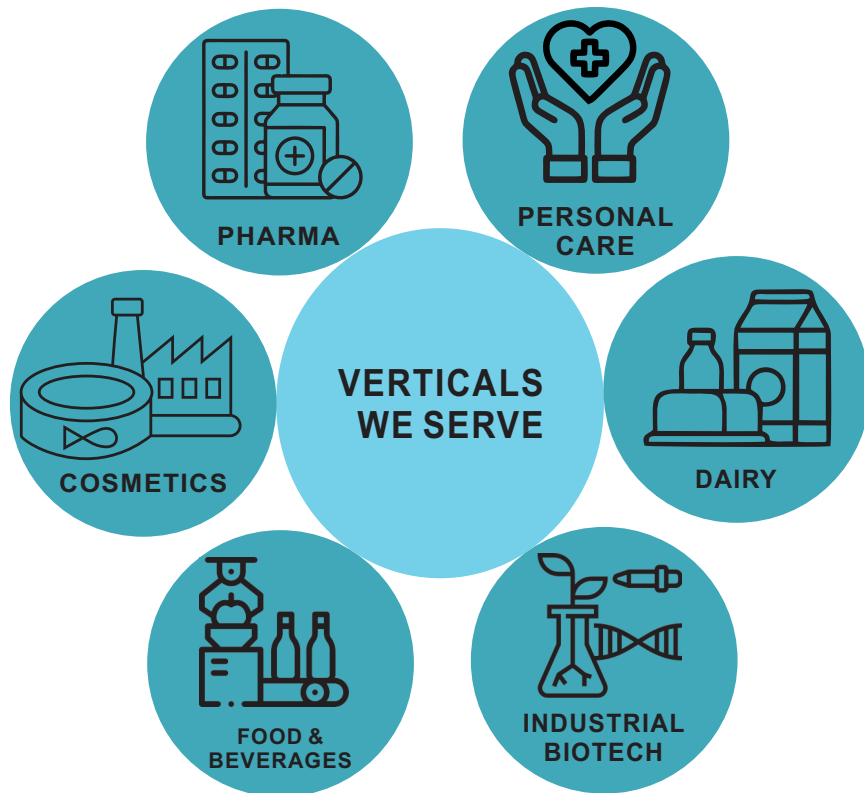
FOUNDED BY A TEAM OF SEASONED ENGINEERS WITH A WEALTH OF EXPERIENCE IN THE PHARMACEUTICAL INDUSTRY, WE'RE DRIVEN BY A PASSION FOR EXCELLENCE.

WHETHER YOU REQUIRE CONSULTANCY SERVICES TAILORED TO YOUR INDUSTRY'S UNIQUE CHALLENGES OR TURNKEY PROJECT SOLUTIONS DESIGNED TO STREAMLINE YOUR OPERATIONS.

WE STAND READY TO BE YOUR TRUSTED PARTNER IN ACHIEVING YOUR VALUABLE GOALS.



# OUR VERTICALS



# TURNKEY WATER SYSTEM

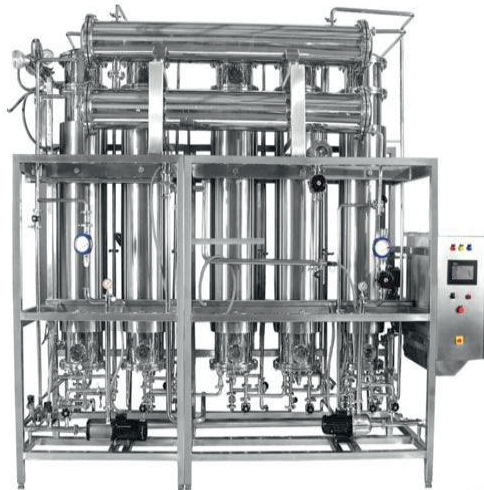
---



**PURIFIED WATER (RO+EDI)  
GENERATION SYSTEM**

## Features:

- Low footprint with optimal accessibility.
- Flexible installation options like membrane-based and resin-based systems.
- Constructed from 316/L stainless steel, internal surface finish up to 0.38 Ra.
- CGMP, GAMP and 21 CFR Complaint system design based on ASME, ASTM, BPE, ISPE, WHO, ENVISA, MHRA, guidelines.
- Permanent Flushing
- Automatic hot water sanitization, shut down & recirculation mode, maintenance & night mode.
- Flexible system integration with other technologies



**MCDP / WFI GENERATION SYSTEM**



**PURE STEAM GENERATOR**



**STORAGE & DISTRIBUTION  
SYSTEM**



# PROCESSING EQUIPMENTS



**STERILE PROCESSING PLANT**

**Applications:**

**Sterile Solutions:** Vials & Ampoules, I.V. Fluids, LVP & SVP Solutions, Serums, Vaccines, Plasma fractions, etc.

**Non-sterile application:** Oral liquids, Suspensions, Cough Syrups, Antacid Solutions, Gelatins, etc.

**Semi-solid products:** Ointment, Cream, Toothpaste, etc.

**Other applications:** MDIs, Nebulizers, etc.

**Features:**

- Aseptic mixing and blending vessels designed as per ASME BPE / cGAMP / PED / USFDA
- Skid based, bottom or top mounted agitator as per process requirements
- Complete CIP / SIP able system with 100% drain
- In-house programming expertise to design customized recipe cycles
- Automation as per 21 CFR part 11



**CREAM/OINTMENT (SEMI-SOLIDS) PREPARATION PLANT**



**ORAL LIQUID PREPARATION PLANT**

# RE-DESIGNING, RE-ENGINEERING & REVAMPING OLD SYSTEMS

- ✓ Redesigning – Modernizing outdated systems to meet evolving industry standards.
- ✓ Re-Engineering – Enhancing performance with advanced technology and smart solutions.
- ✓ Revamping – Upgrading components for better efficiency, sustainability, and cost-effectiveness.
- ✓ Customized Solutions – Tailored to meet your specific operational needs and challenges.
- ✓ Seamless Integration – Ensuring minimal downtime with smooth transition and implementation.



## PIPING WORKS

Purified Water (PW) & Water for Injection (WFI) Piping  
Clean Steam (CS) Piping  
Process Piping  
Heating, Ventilation & Air Conditioning (HVAC) Piping  
Compressed Air & Vacuum Piping  
Nitrogen & Process Gases Piping  
Clean-In-Place (CIP) & Sterilize-In-Place (SIP) Piping  
Effluent Treatment & Wastewater Piping

# STEAM STERILIZER



**STEAM STERILIZER**



**DRY HEAT STERILIZER**

## FEATURES:

- Pre-vacuum sterilization
- Rapid cooling sterilization
- Gravity sterilization
- Automatic self-regulating pressure balancing
- SIP provision for air filters
- Expansion compensation structure which prevents thermal vibration



**BUNG PROCESSOR**

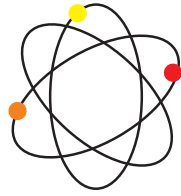


**SUPERLATIVE TERMINAL STERILIZER**

## APPLICATIONS:

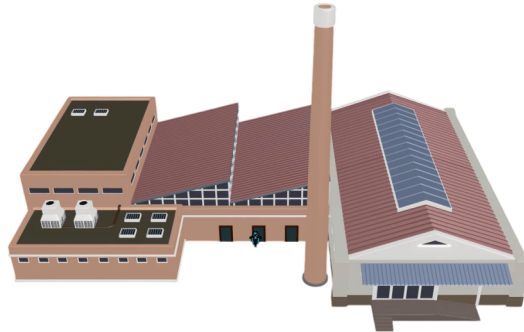
- Solid materials, glass bottles, bags, BFS bottles, etc.
- Porous materials like garments, fabrics, etc.
- Closures, vessels, machines and change parts
- Empty glassware, utensils, instruments
- Solutions in glass ampoules, vials & bottles
- Filters and respective accessories

# EPS



Engineering Pharma Solutions

# Technologies



+91 7506766131  
+91 99300 37882  
[marketing.epstech@gmail.com](mailto:marketing.epstech@gmail.com)



181/1, Mali compound,  
Chinchoti Bhiwandi road,  
Poman-Dongaripada, Vasai  
east - 401208